

Proposed Far North District Plan– Health

New Zealand – Te Whatu Ora

*Presentation to Independent Hearings Panel, evidence
presented by Melissa McGrath*

17th June 2024

Introduction

What we will briefly cover

- ❖ The Role of Health NZ - Te Whatu Ora.
- ❖ Proposed Special Purpose Hospital Zone
- ❖ Spatial Distribution and Location of Hospital Zone
- ❖ Public Hospitals as Regionally Significant Infrastructure
- ❖ Height in Relation to Boundary Rule
- ❖ Definition of Hospital Related Activities
- ❖ Residential Care as Permitted Activities
- ❖ New Objective and Amendments to HOSZ-P1

The Role of Health NZ, Te Whatu Ora

- ❖ Operational functions of the Ministry of Health, day to day running of the health system
- ❖ Promotion and protection of the health of Te Tai Tokerau communities, preventing diseases, reducing inequities and supporting people to be healthy.

Regionally Significant Infrastructure

- ❖ Regional Policy Statement (RPS) defines Regionally Significant Infrastructure (RSI) - including public hospitals.
- ❖ RSI is not just relevant in the infrastructure chapter, transcending many areas of the plan.
- ❖ RSI does not have the elevation in the PDP hierarchy commensurate to its significance to the region.
- ❖ RSI is not limited to specific public hospital locations it is imperative that the Strategic Direction appropriately recognise the importance of public hospitals at a district wide level.

Proposed Special Purpose Hospital Zone

- ❖ Support the introduction of a Hospital Special Purpose Zone
- ❖ Note that Te Whatu Ora have sought amendments to the zone spatially
- ❖ Support S42A recommendations for Definition of Hospital, HOSZ-S1 Building Height, HOSZ-S3 Setback

Spatial Distribution and Location of Hospital Zone



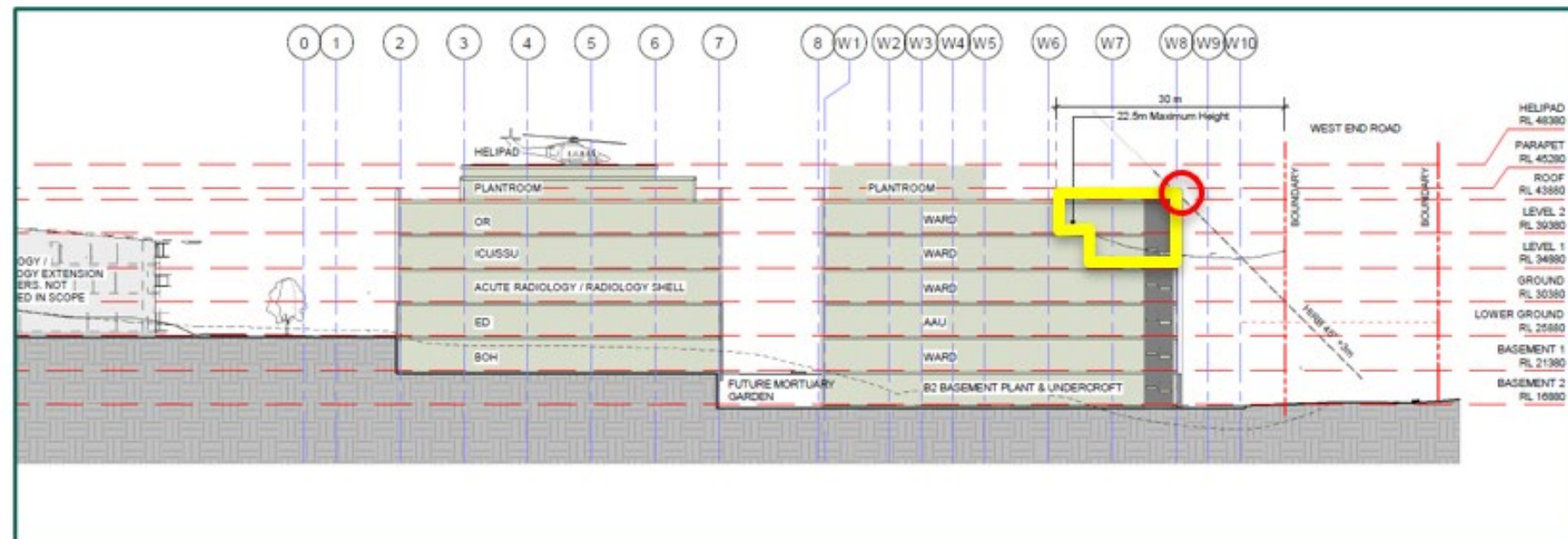
Spatial Distribution and Location of Hospital Zone



Spatial Distribution and Location of Hospital Zone



Height in Relation to Boundary Rule



Hospital Related Activities

- ❖ Amend object HOSZ-O1
- ❖ Definition of Hospital Related Activities
 - Commercial services - private specialist and general medical facilities, visitor accommodation
 - Emergency services
 - Care centers
 - Signage and lighting
- ❖ Delete rule HOSZ-R5