

Kurī Kārere Doggo Digest



Doggo updates and registration info for 2021

Your annual dog registration is due. It helps us keep your canine community safe.



AROHA — Feeling the love of dog ownership

Aimee and Flynn are bonded by AROHA. The 12 year old spaniel-cross has been in Aimee's family even longer than her son. Aiden, 9, loves growing up with soft-hearted and goofy Flynn, whose gentlemanly moustache matches his character.

Because Aimee had Flynn desexed he qualifies for a cheaper registration fee. High-five to that.

You can pay your dog registration online, in person or call us on 0800 920 029.



REHITATANGA | REGISTRATION

Your dog registration fee supports lots of good stuff, like:

- a dog management service that creates a community where people and dogs interact safely.
- our dog re-homing programme which matches Far North dogs with new homes across the country.
- top community canine concerns — straying, barking, aggressive dogs and attacks.
- pro-active community work promoting responsible dog ownership.



HE TAIMA WAHO | OUTSIDE TIME

When going 'walkies' with your dog make sure you read signage on display. Every dog area is unique — we have off-leash and on-leash areas, as well as kiwi and DOC zones. Dog walking areas are listed at the bottom of this page. Or find our maps online at:

Step 1: www.fndc.govt.nz/our-services/dogs

Step 2: Click the link to — Dog Management Policy 2018

Step 3: Find the map for your area from page 20

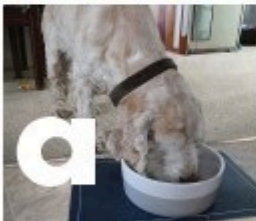


HAUORA KŌRERO | HEALTH INFO

Did you know, canine parvovirus is highly contagious and kills up to 91% of untreated dogs? Puppies and wandering dogs are most at risk of catching parvovirus which can exist in the environment for up to a year.

Parvovirus is easy to prevent but expensive to treat. So, please take your dog to the local vet for a vaccination to stop this disease spreading in our canine community.

For more info: www.spcan.org.nz/advice-and-welfare and enter the keyword "parvo"



HE KAI TIKA MĀRIKA | A GOOD DIET

Did you know, many common foods are poisonous to your dog?

- Grapes and raisins — can damage their kidneys.
- Garlic, chives and onions (often in cooked meat dishes) — can cause stomach and gut irritation.
- Chocolate, cocoa and caffeine — can affect their hearts, lungs, kidneys and central nervous system.
- Cooked bones — can splinter causing an injury.

It might seem like a treat but leftovers can be lethal.

Find out more at: www.justdogs.co.nz/ and click 'dog hints & tips'

Dog Walking Areas

Off-leash all year:

Kaikōhe Old Landfill at Lindvart Park.

Kerikeri Rolands Wood,
Sammaree Reserve, Waitotara Reserve.

Off-leash all year (except 15 Dec-31 Jan
and public holidays, from 10am -5pm):

Ahipara, Cable Bay, Coopers Beach,
Hihī Beach, Mahinepua Beach Paihia
Beach, Russell Beach, Tapeka Point Beach.

Special Character Beaches

that include Prohibited zones:

Taupo Bay, Te Haumi, Te Tii Bay,
Waitangi beaches.

that include off-leash and on-leash areas:

Tauranga Bay.



Source: FNDC Animal Management Team, 6 May 2021

All dogs must be registered by law.

LOST & FOUND HOUNDS

Do you want to increase your chances of finding your missing pooch? And the speed it takes to find them? Then get your pal microchipped.

Make it even easier to find your dog by keeping a note of their 15-digit microchip code.

If your dog loses their collar and reg tags, a microchip is vital. We can add their microchip code to the National Dog Database for you.

FOUND A DOG?

Let us know as soon as possible to reduce stress — for the dog, their owner and you.

FIND A FUR-EVER FRIEND



- It pays to be kind — desexing, microchipping, vaccination, parvo tests and registration are ALL included in our adoption fee.
- To find out more about doggos wanting a forever home go to: www.facebook.com/adoptadogFNDC
- We spread the love by adopting across the country, so send friends and whānau looking for a fur friend our way or to our facebook page.

FUR THE LOVE OF DOGS

When Margaret went online to organise her 80th birthday celebrations, a new addition to the family wasn't part of the plan. But when she came across six-month-old Jax on our *Adopt a dog* — FNDC Facebook page, it was an online love match!

Jax, a shy but energetic wire-haired Jack Russell Terrier, flew through her adoption suitability test and Margaret was already a pre-approved adoption candidate. Since arriving at her new home, Jax hasn't been shy with her aroha. Margaret and her husband feel the same way about Jax — she's given them a good excuse to get out walking and join in with the local canine community.



TAKE THE LEAD Pay online with MyFNDC

- It's quicker, easier and available 24/7.
- Your dog registration will be cheaper if you pay before 1 September.

Register for My FNDC to make payments easier at: www.fndc.govt.nz/our-services/dogs/register-your-dog

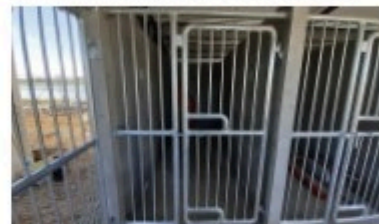


Here boy! Otto will be at a service centre near you. He's a friendly reminder to pay your dog registration fee in time.
Good boy Otto.

FLASH FACILITY OPENING

A brand spanking new animal shelter in Kaitiāia is due to be up and running by late July.

The new Northern Animal Shelter has space for up to 12 dogs, separate quarantining facilities for puppies and adult dogs, exercise areas and veterinary facilities. The purpose-built shelter cost \$1.5 million and took 190 construction days to build.



FNDC ANIMAL CONTROL SERVICES



Call: 0800 920 029
Email: ask_us@fndc.govt.nz
Visit: www.fndc.govt.nz/our-services/dogs
[facebook.com/adoptadogFNDC](https://www.facebook.com/adoptadogFNDC)

We care about stock too

When reporting any wandering cows, horses or other lost beasts, please reference the nearest letter box number or intersecting street name to increase our chances of tracking down both beast and owner.



Doggone it!

Your dog registration helps us to:



For more info visit: www.fndc.govt.nz/our-services/dogs