

Road Maintenance and Renewals Contract

MONTHLY REPORT – APRIL 2026

**FAR NORTH DISTRICT COUNCIL
CONTRACT 7/18/101**





1. SUMMARY

April was a wet but productive month, recorded as the wettest April in the past 20 years. An early-month weather event, while less severe than initially forecast, delivered further rainfall to the western portion of the network, which was already saturated following prolonged wet weather in preceding weeks. This resulted in additional damage and necessitated ongoing recovery works.

Storm recovery activities continued in the western areas, with subcontractors primarily focused on Wekaweka Road and Waiotemarama Gorge Road, which were the most significantly affected. Crews are expected to remain in these locations for a further couple of weeks while initial repairs are completed.

The reseal and rehabilitation programmes for the season were successfully completed during the month, representing a significant milestone. Several long-standing problem areas were addressed as part of these works. Te Ahu Ahu Road was the final rehabilitation site to be completed; although weather conditions caused delays, a brief improvement in conditions allowed sealing and line marking to be completed.

Following the completion of the sealed rehabilitation programme, attention shifted to the unsealed network, with a wearing course commencing on Horeke Road. In parallel, the asphaltic concrete resurfacing programme continued, with Selwyn Road, Williams Road, and Kerikeri Road each receiving 55 mm of new AC14 surfacing. All sites were completed and line marked.

Vegetation maintenance was a key focus during April, with two tractors operating across the network—one in the western areas and the other in Russell. Approximately 56 km of vegetation was mowed, including large sections on Manawaora Road and Rawhiti Roads.

Drainage activities continued throughout the month, including over 6 km of water tabling and the installation of 18 new culvert lines. While the benefits of drainage improvements are difficult to quantify precisely, these works continue to support network resilience by assisting with slip prevention and reducing the impacts of severe weather events. Overall, the network has performed well given the volume of rainfall experienced this year.

Looking ahead, the focus will now transition to the winter programme, with an emphasis on unsealed road rehabilitations and wearing course applications. Planning will also commence for the next season's sealed rehabilitation and resealing works, ahead of a scheduled start in October.

Nga Mihi

Rob Savage

Claim for the Month of April 2026

FNDC South	Total
1.1420.02.2407 - BOI/Whangaroa Ward Footpaths Mtce	\$ 9,870.31
1.1420.04.2407 - Kaikohe/Hokianga Ward Fpaths Mtce	\$ 7,136.80
4011.1.1.4922 - Drainage Renewals 213	\$ 136,308.67
4014.1.1.4922 - Sealed Road Resurfacing 212	\$ 1,427,765.73
4015.1.1.4922 - Unsealed Road Metaling 211	\$ 212,254.20
4016.1.1.2405 - Seal Pavement Maintenance 111	\$ 49,326.64
4017.1.1.4922 - Pavement Rehabilitation 214	\$ 126,090.94
4021.1.1.2405 - Traffic Services Maintenance 122	\$ 6,783.42
4022.1.1.4922 - Traffic Services Renewals 222	\$ 10,455.82
4030.1.1.2405 - Environmental Maintenance 121	\$ 488,847.67
4031.1.1.2405 - Routine Drainage Maintenance 113	\$ 138,461.32
4118.1.1.2405 - Unsealed pavement mtce 112	\$ 105,903.27
4119.1.1.2405 - Structural Maintenance 114	\$ 4,174.18
5072.1.1.2405 - Tau Henare Drive	\$ 546.00
8016.1.1.2423 - CM Seal Pavement Maintenance 111	\$ 19,882.31
8021.1.1.2423 - CM Traffic Services Mtce 122	\$ 16,261.93
8030.1.1.2423 - CM Environmental Maintenance 121	\$ 16,661.65
8031.1.1.2423 - CM Routine Drainage Mtce 113	\$ 14,630.48
8118.1.1.2423 - CM Unsealed Pavement Mtce 112	\$ 33,835.88
8119.1.1.2423 - CM Structural Maintenance 114	\$ 7,810.59
8251.1.1.2407 - State Highway Cleaning	\$ 1,394.55
Total	\$ 2,834,402.36

2. WORK PROGRAMME

A total of 1,306 individual work items were completed throughout the month of April, of which 603 were routine find and fix issues, 192 were programmed works, 30 renewals/capital projects, 409 cyclic and 72 were callouts or emergency response works.

May 2026 forward works programme has been submitted in AWM.

3. ROUTINE INSPECTION REPORT

A total of 476 Inspections (patrolled roads) have been completed routinely for April.

Sealed – Maintenance Patrol:

There was 0 sealed inspection completed outside of target frequency. 257 were completed.

Unsealed Inspections:

There were 0 un-sealed inspections completed outside of target frequency. 186 were completed.

Drainage – Annual Inspections

There are currently 0 drainage inspections running overdue. 33 were completed.

Network Area Inspection	
South Area – April 26	
Week 1	231.6km
Week 2	194.4km
Week 3	205.0km
Week 4	187.9km
Total KM	818.9km

4. ROUTINE WORKS COMPLETED

Routine maintenance activities completed in April:

- 230 sealed potholes repaired
- 385 unsealed potholes repaired
- 675m³ of running course applied
- 65.5km of unsealed roads graded equating to 9.1% of the total unsealed network

- 257 Catchpit entrances cleared
- 0.22km of (hand) roadside vegetation cut back
- 56.3 km of tractor vegetation control

5. EMERGENCY WORKS

Early in the month, the network was impacted by an ex-tropical cyclone. While the event was less severe than initially forecast, it nevertheless delivered a significant volume of rainfall to the western portion of the network, which was already saturated as a result of preceding weather events. April has been recorded as the wettest in the past 20 years, with the Kerikeri weather station recording almost 400 mm of rainfall. Localised areas, such as Wekaweka, are likely to have experienced higher totals.

At the time of the event, extensive repair works were already underway, particularly on Wekaweka Road, which sustained the most significant damage. Progress photographs are provided below. The initial clean-up works are anticipated to be completed by mid-May.



6. DRAINAGE MAINTENANCE & RENEWALS

Drainage maintenance activities completed in April:

- 6.6km of water tabling
- 129.8m of Culvert pipes replaced/new (18 new lines)
- 146 Culvert inlet/outlets cleared
- 33 Culverts flushed
- 35 Headwalls constructed

Ray's crew successfully completed the replacement of 18 culverts across 13 roads, along with the installation of 29 headwalls—delivering a significant boost to stormwater management and network resilience. In addition to the scheduled works, the team undertook vital maintenance activities, including culvert clearing and water tabling, to enhance drainage performance and mitigate the risk of future disruptions.

Roads that received new culvert lines included:

- | | | |
|--------------------------|-------------------|-----------------------|
| ➤ Barnes Road | ➤ Brindle Rad | ➤ Callaghans Road |
| ➤ Hay Road | ➤ Horeke Road | ➤ Inkster Road |
| ➤ Matawaia-Maromaku Road | ➤ Marlow Road | ➤ Maromaku-Towai Road |
| ➤ Puketotara Road | ➤ Settlement Road | ➤ Tipene Road |
| ➤ Waiare Road | | |



Tipene / Inkster Roads



Before / After Reservoir Road

7. FOOTPATH RENEWALS

Aside from minor maintenance repairs, no footpath renewals were completed during April. During the month, Mike and his team supported storm recovery activities and commenced preparatory works for the next footpath renewal in Rawene, including boxing and basecourse placement. The footpath is scheduled to be poured and completed in early May.





Parnell St

8. ROAD FURNITURE ACTIVITY

- 25 new signs installed or replaced (damaged or missing)
- 28 signposts replaced/new
- 41 signs re-erected or straightened
- 34 signs/posts cleaned
- 11 posts re-painted
- 16 Edge marker/delineators replaced or straightened
- 13m of railing renewal/replacement

9. ORDERED WORKS

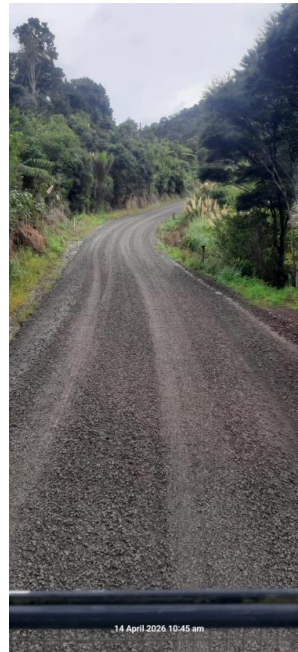
Ordered works carried out:

- 2.5km of footpath vegetation
- 261m² Footpath repairs (maintenance & renewals)
- 436.9m² of Stabilised patches
- 20.7m² of Pavement digouts
- 232m of edgebreak repairs (>1m)
- 3.9km of high & low shoulder treatments

10. UNSEALED NETWORK

Maintenance metal was applied to 22 roads throughout April. This treatment aims to improve traction, extend the lifespan of the pavement and allow graders more material to shape the roads. Roads that received top up metal included:

- Auckland Block Road
- Duddy Road
- Koutu Point Road
- Mountain Road
- Ramsey Road
- Waikare Road
- Waione Road
- Whirinaki School Road
- Brindle Road
- Hupara Road
- Mission Oak Road
- Ohuri Road
- Retreat Road
- Waikino Road
- Waiotemaroma George Road
- Curtis Road
- Jackson Road
- Motukiore Road
- Otaha Road
- Smoothey Road
- Waima Valley Road
- Wekaweka Road



Wekaweka Road / Motukiore Road

During April, the Heavy Metalling programme commenced on the unsealed network, with a wearing course started on Horeke Road. These works involved the placement and compaction of approximately 2,000 m³ of GAP 30 aggregate at a nominal depth of 100mm.

These treated pavement sections are expected to bind effectively over the coming months. The additional aggregate depth will also provide improved material availability for ongoing grading operations, supporting the long-term shape and performance of the road.



Horeke Road (Utakura Valley)

11. VEGETATION

In April, a total of 56 kilometres of roadside vegetation was successfully trimmed as part of our ongoing vegetation envelope programme. This proactive maintenance work plays a key role in ensuring road user safety and significantly improved sight lines along the affected routes. Enhanced visibility is particularly important on rural and high-speed corridors, where overgrown vegetation can obstruct views around corners and intersections. The western and eastern areas of the network were the focus this month. Roads Completed include:

- Conifer Lane
- Riverstream Road
- Pakehau Road
- Kapiro Road
- Rawhiti Road
- Russell Road
- Manawaora Road



Pakehau / Rawhiti Roads

12. REHABILITATIONS

Te Ahu Ahu Road

A suitable weather window was secured to complete the sealing and line marking works on this site. This marks the completion of the planned sealed rehabilitation programme for the current season.

These works have delivered noticeable improvements and addressed several previously problematic sections of the network.

Focus will now shift to the unsealed network, including wearing course renewals and heavy metal build-ups over the coming months. Planning will also commence for the next season's sealed rehabilitation programme.



13. SEAL REPAIRS

The patching crew relocated to Russell to complete a number of stabilised patches as part of the maintenance patch programme. This work included both planned stabilised patches and dig-outs outside of the reseal programme, as well as repairs arising from the January weather event.

The crew will continue with this programme for a further one to two weeks into May to complete some remaining sites, after which this activity will be concluded for the current season.



14. RESURFACING

In April, the resealing programme for the season was completed. The following roads were resealed during the month:

- Callaghans Road
- Ohara Street
- Rahiri Settlement Road
- Maromaku-Towai Road
- Pembroke Road
- Te Ahu Ahu Road
- Massey Street
- Puia Street
- Hawkins Crescent

In May, the sealing crew will undertake a small number of minor private works, while planning activities commence for the upcoming resealing season. This will include a review of all proposed sites, finalisation of pre-seal repair requirements, and confirmation of seal designs.



Massey Street

In addition to the resealing programme, the AC programme continued in April, with three roads receiving new asphaltic concrete surfacing. These sites involved a 55mm mill and fill using AC14. This activity is less susceptible to temperature and can be laid later in the season compared to chip sealing.

Roads completed include:

- Selwyn Street
- Williams Road
- Kerikeri Road



Williams Road



Selwyn Street



Kerikeri Road

Ventia – FNDC South 7/18/101 Monthly Report – April 2026

15. ROAD ACCIDENT REPORT

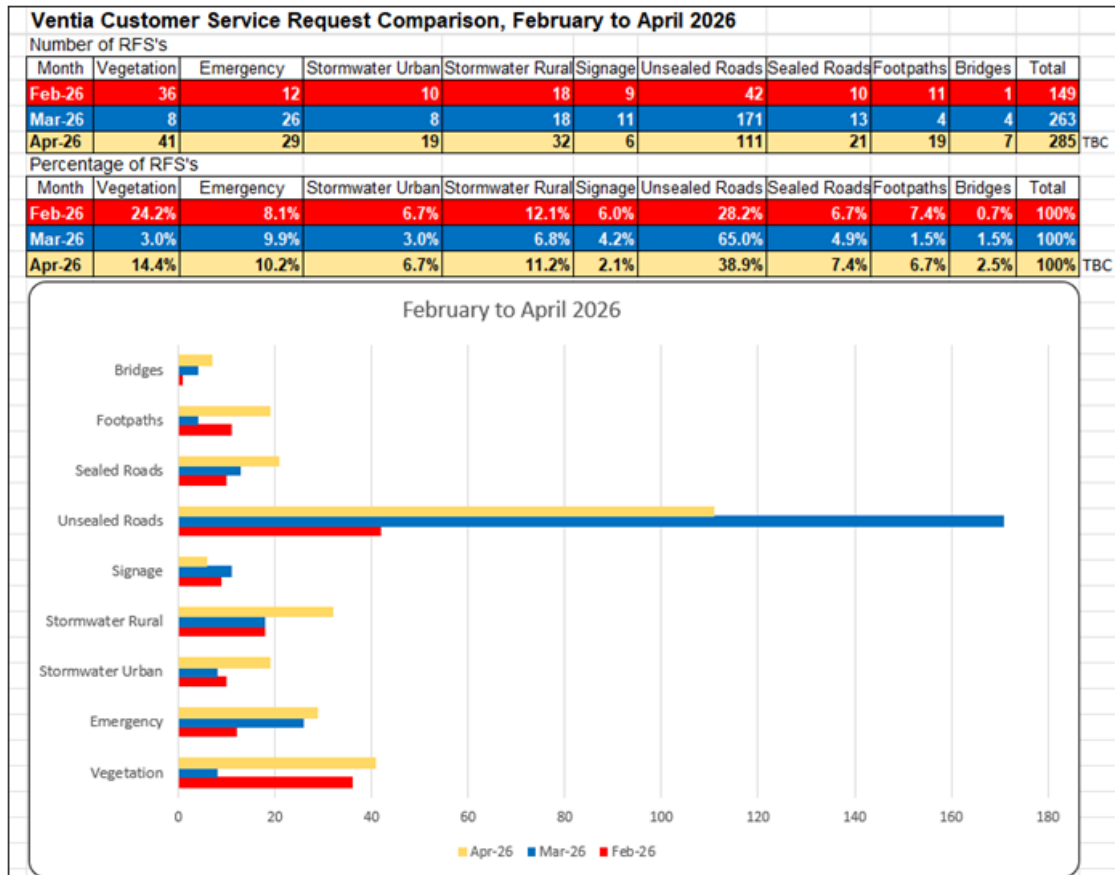
No accidents to report in April. The section of Wiroa Road has been reviewed by FNDC and no pavement defects or hazards were identified.

16. AWM ISSUES

ASSET & WORK MANAGER

No issues in April 26 – Any operational events of note are being recorded to provide feedback to Thinkproject.

17. CUSTOMER SERVICE ISSUES / COMPLAINTS



18. COMPLIMENTS

We received three compliments for the month of April.

Pania wrote – “I would like to compliment the contractor doing vegetation clearing in Omanaia and Rawene Road - he is doing a great job and taking extra care which is awesome to see.” – Rawene Mowing.

Brian wrote – “I would like thank the contractors for clearing the footpath outside 23 Waipapa Road.” – Waipapa Road Footpath vegetation.

Grant wrote – “Hi there, the tractor mower operator has done a fantastic job of cutting the road verges in the Russell surrounding areas and back road. Thankyou very much.” – Russell tractor mowing.

19. HEALTH & SAFETY & WELLBEING

SAFETY STARTS WITH ME
Safety is our first priority - every day, every job

My Non-Negotiables as a Leader:

- I CHECK THE PLAN AND VERIFY IT**
Job start card reflects the work being done
- I CHECK PLANT CONDITION AND PRE-STARTS ARE COMPLETED**
Equipment is safe and ready to use
- I CONFIRM PPE IS WORN PROPERLY**
Every person, everytime
- I ASK "WHAT'S CHANGED TODAY"**
Immediately and consistently
- I REINFORCE POSITIVE BEHAVIOURS**
Immediately and consistently

IF YOU SEE SOMETHING UNSAFE SAY SOMETHING, EVERY TIME ventia

SAFETY STARTS WITH ME
Safety is our first priority - every day, every job

My Non-Negotiables:

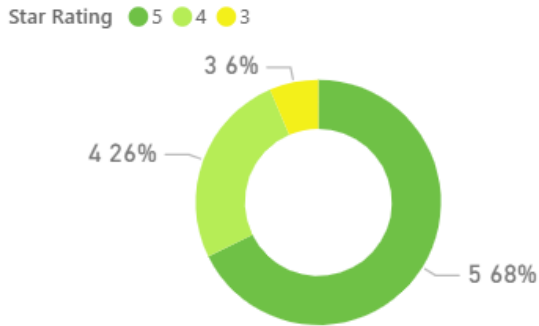
- I TURN UP READY TO GO**
Rested, fit for work and focused for the job ahead
- WE START WITH A GREAT PLAN AND WE SHARE IT**
Our job start card reflects the work being done
- OUR PLANT IS CHECKED AND READY**
ClampCheck completed
Anything unsafe is reported and tagged out
- WEAR THE RIGHT PPE FOR THE JOB**
Hearing protection, gloves, safety glasses, safety boots, helmet and hi-vis vest
- IF THE PLAN CHANGES, WE STOP AND MAKE A NEW PLAN**
Take FIVE - Reassess hazard onsite, controls and responsibilities

IF YOU SEE SOMETHING UNSAFE SAY SOMETHING, EVERY TIME ventia

April saw the Roll-out of the new **Non-Negotiable** campaign, aimed at reinforcing Safety as our main priority. The lists of Non-Negotiable for Leaders & for Field Staff were rolled out at a Branch toolbox meeting, and a short video series has been running on our daily plant check App with our business leader explaining what each Non-Negotiable means to them, as part of this the team have been entering their reasons and how they carry them out as part of the campaign, so far the input and feedback has been very positive.

115K -19% 3146 -23%
 Distance Travelled Total Running Hours

Star Rating Distribution



As of 30th April, the Branch has recorded a pleasing shift, with a significant increase 5 Star driver ratings, up 27% from last month. Due to the increase, there was a 21% decrease in 4-star ratings and a 6% decrease in 3-star ratings, with no drivers rated at 2 stars. It is worth noting that the Branch has maintained a consistently strong standard throughout the reporting period, with most drivers achieving 4- or 5-star ratings and an overall monthly average of 4 stars.

We also had a BBQ for our staff as a celebration for resecuring our contract. Spirits were high and it was a great afternoon.



20. TRAINING

This month we took the opportunity to upskill more of our team, with five of them attending a “Sling Regular Loads Safely”, Unit Standard 30072, course to help keep them safe and improve operational efficiency.

21. ENVIRONMENT

In April we had no notifiable incidents to report.

22. ANNUAL ROUTINE ACTIVITY ACHIEVEMENT

Routine and cyclic rounds start at the financial year (July 2025/26):

Biennial Painting of All Rails	35%	complete
Biennial Parapet Painting of Bridges	54%	complete
Annual Cleaning of EMP's	41%	complete
Annual Sucking of All Sumps	22%	complete
Biannual sweeping	0%	complete (round 2)
Urban Vegetation Spraying	9%	complete (round 2)
Rural Vegetation Spraying	15%	complete (round 2)
Line marking Network Remark	30%	complete

23. SMALL TO MEDIUM ENTERPRISE (SME) BUSINESS ENGAGEMENT

Summary of SME engagement through the last financial year - 1st July 23 to 30th June 25.

Measurement	Qty
Local Contractor component of work	35%
Internal salaries and wages (Generally invested back to local communities)	\$3,832,159.42
Local labour hire wages	\$735,431.24
Other internal local market expenditure e.g., local supplier purchases etc. Includes local Ventia Quarry purchases	\$7,503,567.00

24. OTHER WORKS IN PROGRESS

Waipapa Bay Sports Complex Carpark

Improved weather conditions enabled the sealing crew to return to Waipapa and complete the sealing of the carparks. The completed works have resulted in a significant improvement to the site, with the finished surface completed to a high standard.

The concrete team has also completed upgrade works to the steps, including the installation of new handrails to improve safety and enhance the overall finish of the area.

The seal will remain open to traffic for a short period prior to line marking and the installation of wheel stops. Speed humps have been installed at both the entrance and exit to the carpark. A new chain has been installed to close off the third carpark, with additional signage to be installed to finalise the works.



Kerikeri Golf Club

During April, the patching crew completed extensive maintenance works on the golf club driveway and carpark. Recent works included the construction of a large stabilised area, which has been programmed for sealing in early May.



Upcoming work

Mangamuka Slip Resilience

Repair works are scheduled to commence early May at a slip site on Mangamuka Road. Works will involve the excavation of slip material, which will be relocated across the road to form a designated parking area for the local iwi and adjacent urupā.

As part of the remediation, drainage improvements will be undertaken, including the installation of a new manhole and associated civil boss pipework. A series of timber piles will be driven into the slip area prior to backfilling to road formation level. The pavement will then be sealed and line marked to complete the works.

These measures are intended to stabilise the site, reduce the risk of further slip movement, and reinstate the carriageway to full two-lane operation.

Haruru Falls Slip Repair

A slip that developed on Haruru Falls Road during a recent rain event is currently being prepared for repair. Initial works have included the removal of a portion of the slip material and the construction of an access ramp to enable entry for geotechnical testing crews.

The geotechnical investigation involved drilling to obtain ground samples, which will be used to inform the design of an effective long-term remediation solution. This investigation is critical to gaining a clearer understanding of site conditions and reducing the risk of future slip movement.

25. NTE/NTC

A section to show what Notices to Engineer and Notice to Contractors are outstanding.

Notice to Engineers outstanding.

NTE Number	Date Sent	Description	Accepted / Declined / Info only	Responding NTC
------------	-----------	-------------	---------------------------------	----------------

Notice to Contractors outstanding.

NTC Number	Date Sent	Description	Accepted / Declined / Info only	Responding NTC
------------	-----------	-------------	---------------------------------	----------------

Nga Mihi

Rob Savage

Contract Manager – FNDC South Maintenance Ventia (NZ) Ltd