

# Road Maintenance and Renewals Contract

**MONTHLY REPORT – JUNE 2025**

**FAR NORTH DISTRICT COUNCIL  
CONTRACT 7/18/101**





# 1. SUMMARY

The first month of winter saw two minor weather events and a total of 130mm of rainfall. While there was no significant damage reported, we did experience some localized flooding and several fallen trees across the network. Thanks to the quick response from our teams and subcontractors, these issues were cleared promptly, helping to ensure our roads remained safe and accessible.

In early June, we had the pleasure of attending the Northland Civil Contractors Awards Dinner in Whangārei. We were proud to take home the Humes Asset Maintenance Award for our FNDC South Maintenance Contract—an incredible achievement and a testament to the hard work of our team and subcontractors. Winning this award for the second consecutive year is a huge honour. Additionally, Hautapu Road Rehabilitation project earned second place in the \$0–\$500K category. Congratulations to everyone involved in this standout project. The evening was also a great opportunity to connect with other contractors and celebrate the quality work happening across Northland.



Looking ahead, we've now received our list of rehabilitation and reseal sites for the 2025/26 construction season. Beam testing is currently underway on the rehab sites, while Doug has been out inspecting and marking up pre-seal repairs on the reseal sites. These repairs ensure smoother, longer lasting, and safer pavement surfaces once sealing is complete.

Rehab. crews were busy in June laying new unsealed wearing courses across ten roads. This 100mm layer of GAP 30 aggregate will compact well over winter, providing a solid base that will allow for easier grading and better shape retention in the future.

Drainage crew continued with culvert replacements in the western part of the network, also completing additional water-tabling while on site. Looking ahead, new double-barrel 600mm culverts are scheduled for installation next month on Waiakare Road, a known flood-prone area that often suffers pavement damage during heavy rain events.

Mike's concrete crew completed a few small footpath repairs and installed a dish channel on Ward Drive, as well as attending to slips and other emergency works. They also scoped and measured several footpath renewals in the Kerikeri area.

Our patrol teams continued their "find and fix" trial, which has now entered its third month. We're already seeing promising results including a 22% increase in completed dispatches compared to the same period last year under the previous system. We are working closely with FNDC to refine this approach with the goal of adopting it more broadly to lift the overall level of service on the network.

Lastly, we celebrated Matariki (Māori New Year) with a shared breakfast up at the quarry. It was a special occasion that holds cultural significance for many of our staff. A huge thank you to everyone who contributed to making the morning such a success.

Nga Mihi

Rob Savage



## 2. WORK PROGRAMME

A total of 3,030 individual work items were completed throughout the month of June, of which 1,169 were routine find and fix issues, 126 were programmed works, 3 renewals/capital projects, 1,703 cyclic and 29 were callouts or emergency response works.

July 2025 forward works programme has been submitted in AWM.

## 3. ROUTINE INSPECTION REPORT

A total of 450 Inspections (patrolled roads) have been completed routinely for June.

### **Sealed – Maintenance Patrol:**

There were 4 sealed inspections completed outside of target frequency. 213 were completed

### **Unsealed Inspections:**

There were 2 un-sealed inspections completed outside of target frequency. 181 were completed

### **Drainage – Annual Inspections**

There are currently 0 drainage inspections running overdue. 56 were completed

| Network Area Inspection |             |
|-------------------------|-------------|
| South Area – June 25    |             |
| Week 1                  | 392.26 km   |
| Week 2                  | 405.01 km   |
| Week 3                  | 302.78 km   |
| Week 4                  | 281.06 km   |
| Total KM                | 1,381.11 km |

## 4. ROUTINE WORKS COMPLETED

Routine maintenance activities completed in June:

- 233 sealed potholes repaired
- 1,035 unsealed potholes repaired
- 1,070.9m<sup>3</sup> of running course applied
- 92.65km of unsealed roads graded equating to 13.1% of the total unsealed network
- 196 Catchpit entrances cleared

- 1.51km of (hand) roadside vegetation cut back
- 15.5km of tractor vegetation control

## 5. EMERGENCY WORKS

We had two relatively small weather events, one at the start of the month and one at the end of the month but still experienced several trees down and localised flooding.



*Knudsens Road / Pine Hill Road*

## 6. DRAINAGE MAINTENANCE & RENEWALS

Drainage maintenance activities completed in June:

- 0.4km of water tabling
- 152m of Culvert pipes replaced/new (15 new lines)
- 1 Culvert inlet/outlets cleared
- 34 Culverts flushed
- 6 Headwalls constructed

In June, Drainage crew successfully installed 15 new culvert lines. These installations are aimed at improving drainage, reducing surface water issues, and enhancing overall road resilience in rural and semi-rural areas. Roads that received new culverts during this period included Waitemarama Gorge Road, Wekaweka Roa and Taita Road. Each location was selected based on priority assessments and local drainage needs.

The below map shows culverts completed in June.



*June Culvert Renewals*



*Before / After Taita Road*

## 7. FOOTPATH MAINTENANCE/RENEWALS

Footpath crew has spent the past month completing various outstanding tasks across the network and responding to emergency works resulting from weather events. Footpath renewals are scheduled to take place in Kaikohe (Park Road) and Kerikeri over the coming weeks, with progress dependent on an anticipated improvement in weather conditions.



*Ward Drive / Taumatawiwi*

## 8. ROAD FURNITURE ACTIVITY

- 26 new signs installed or replaced (damaged or missing)
- 5 signposts replaced/new
- 17 signs re-erected or straightened
- 7 signs/posts cleaned
- 0 posts re-painted
- 36 Edge marker/delineators replaced or straightened
- 31m of railing renewal/replacement

## 9. ORDERED WORKS

Ordered works carried out:

- 76 Barriers/rails cleaned and painted
- 19m<sup>2</sup> temp pavement failure repairs
- 48.5m Footpath vegetation cut back
- 30.5m of edgebreak repairs (>1m)



*Matawaia Maromaku / Manawaora Road*

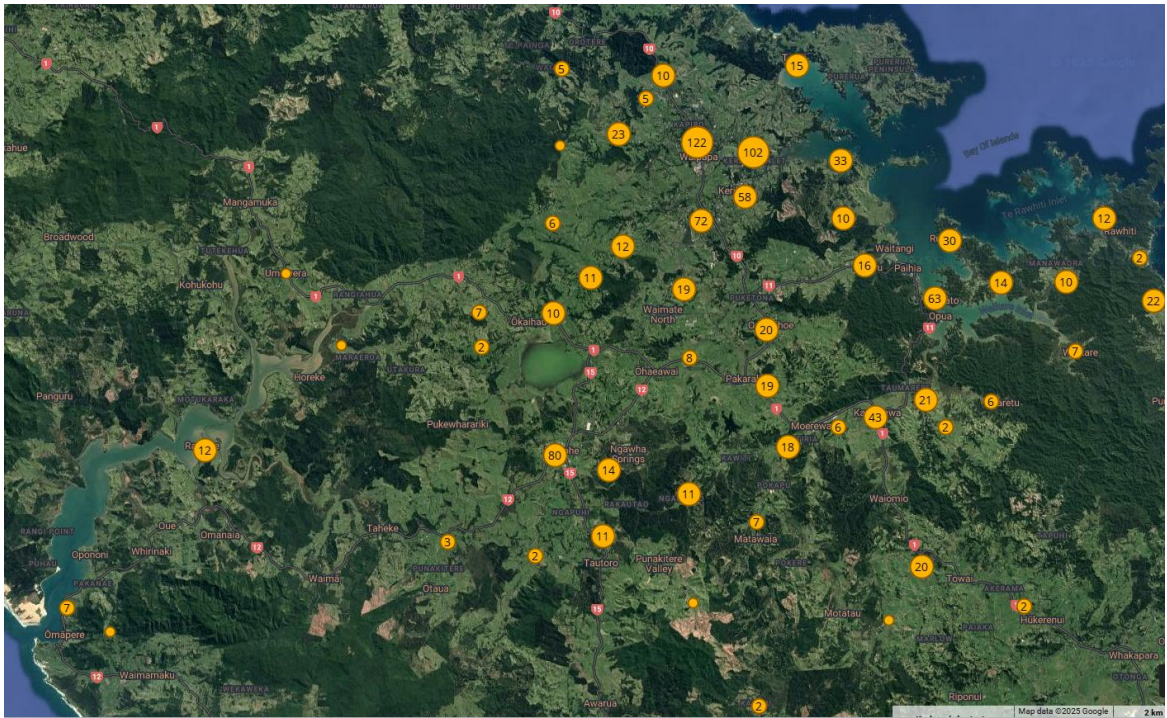
## 10. FIND AND FIX TRIAL

Over the past three months, we have been operating under a “find and fix” maintenance model across our sealed road network. This proactive approach allows our teams to identify and address defects in real time, rather than relying solely on pre-scheduled repairs.

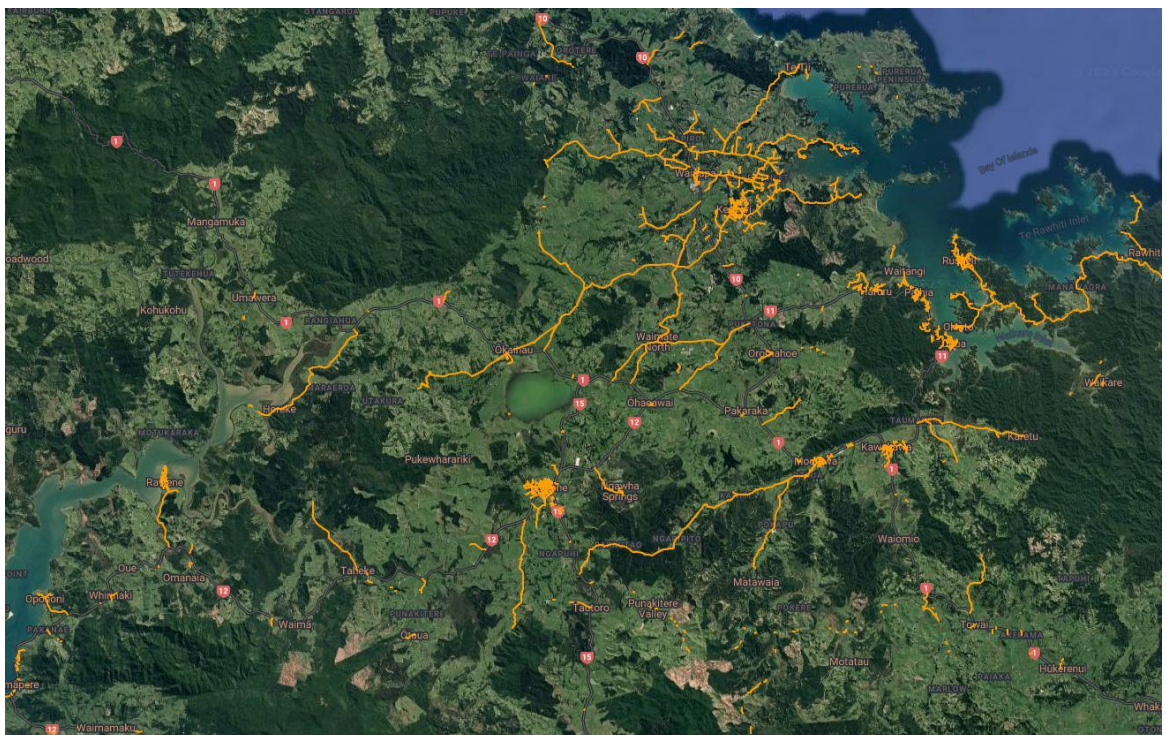
We are already seeing benefits from this method, with a 22% increase in the number of dispatches completed compared to previous periods. This uplift contributes to a higher overall level of service for road users. As a result, we are seeing better outcomes in terms of road condition and user satisfaction across the network.

We are currently working closely with the Far North District Council (FNDC) to further refine and optimise this model. Our goal is to continue using this approach, with adjustments made based on field data, feedback, and performance trends.

The maps below illustrate the number of dispatches, and the specific sections of road completed during the month of June, highlighting the areas where this model is actively contributing to network improvement.



*June dispatches Completed*

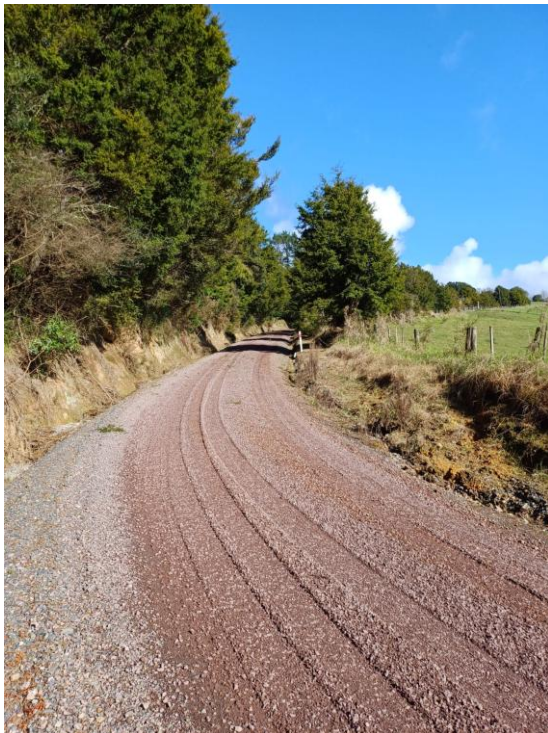


*June Roads Completed*

## 11. UNSEALED NETWORK

Maintenance metal was applied to 35 roads across the network in June. This treatment aims to improve traction and extend the lifespan of the pavement ahead of the winter season. Roads included:

- |                    |                           |                   |
|--------------------|---------------------------|-------------------|
| ➤ Curtis Road      | ➤ Horahora Road           | ➤ James Street    |
| ➤ Marlow Road      | ➤ Masons Road             | ➤ Mhirata Road    |
| ➤ Monument Road    | ➤ Mudgway Road            | ➤ Old Valley Road |
| ➤ Otaha Road       | ➤ Owae Road               | ➤ Paiaaka Road    |
| ➤ Peri Road        | ➤ Puketi Road             | ➤ Puketotara Road |
| ➤ Ranui Road       | ➤ Remuera Settlement Road | ➤ Rigden Road     |
| ➤ Ruapekapeka Road | ➤ Russek Road             | ➤ Saward Road     |
| ➤ Smith Camp Road  | ➤ Squires Lane            | ➤ Stanners Road   |
| ➤ Taita Road       | ➤ Takou Bay Road          | ➤ Uruti Road      |
| ➤ Waihuka Road     | ➤ Waikare Road            | ➤ Waikino Road    |
| ➤ Waione Road      | ➤ Wakelin Road            | ➤ Wharekawa Road  |
| ➤ Whangae Road     | ➤ Wekaweka Road           |                   |

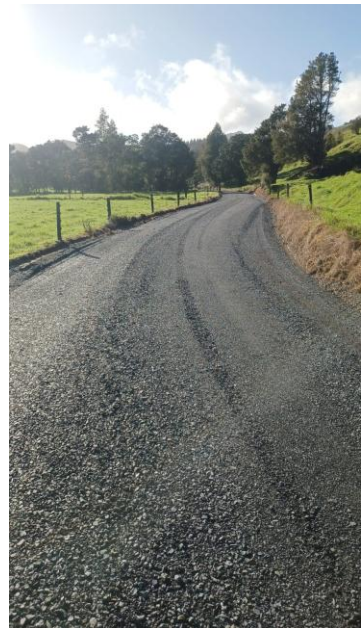


*Whangae Road / Squires Lane*

Rehab. crews carried on with our Heavy Metalling in June with more than 10,000m3 of gap 30 aggregate in the form of Wearing courses put on nine Roads across the network:

- |                     |                |                  |
|---------------------|----------------|------------------|
| ➤ Nelsons Road      | ➤ Waioutu Road | ➤ Tapuhi Road    |
| ➤ Mangakaretu Road  | ➤ Okokako Road | ➤ Picadilly Road |
| ➤ Pokapu Road       | ➤ Puketi Road  | ➤ Waikaramu Road |
| ➤ Waima valley Road |                |                  |

These sections of pavement should bind together nicely over the winter months, with the 100mm wearing course allowing plenty of material for our graders to maintain their shape over the coming years.



*Tapuhi Road / Waioutu Road*



*Pokapu Road*

## 12. VEGETATION

In June, a total of 15.5 kilometres of roadside vegetation was successfully trimmed as part of our ongoing vegetation envelope programme. This proactive maintenance work plays a key role in ensuring road user safety, with the latest efforts delivering significantly improved sight lines along the affected routes. Enhanced visibility is particularly important on rural and high-speed corridors, where overgrown vegetation can obstruct views around corners and intersections.

As part of the month's programme, the tractor completed a full sweep of Waiare Road, one of the busier unsealed roads in our network. This route is frequently used by residents and school buses, making clear sightlines essential for the safety of all road users.



*Before / After Waiare Road*

## 13. REHABILITATIONS

We have received our list of Rehabs for the 25/26 season and testing is underway for these sites so we can begin the designing/planning process. Beam testing has been carried out. Sites with Rehabs during the 25/26 season include:

- Te Ahu Ahu Road
- Pataka Lane
- Ngapipito Road
- Marlow Road
- Augusta place
- Homestead Road Service Lane 2

***Wiroa/Waimate North Intersection***

We are currently working on the surveying and design work for this rehab and hoping to start construction in August.

## 14. ROAD ACCIDENT REPORT

No accidents to report in June.

## 15. AWM ISSUES



No issues in June 25 – Any operational events of note are being recorded to provide feedback to Thinkproject.

## 16. CUSTOMER SERVICE ISSUES / COMPLAINTS

### Ventia Customer Service Request Comparison, April to June 2025

Number of RFS's

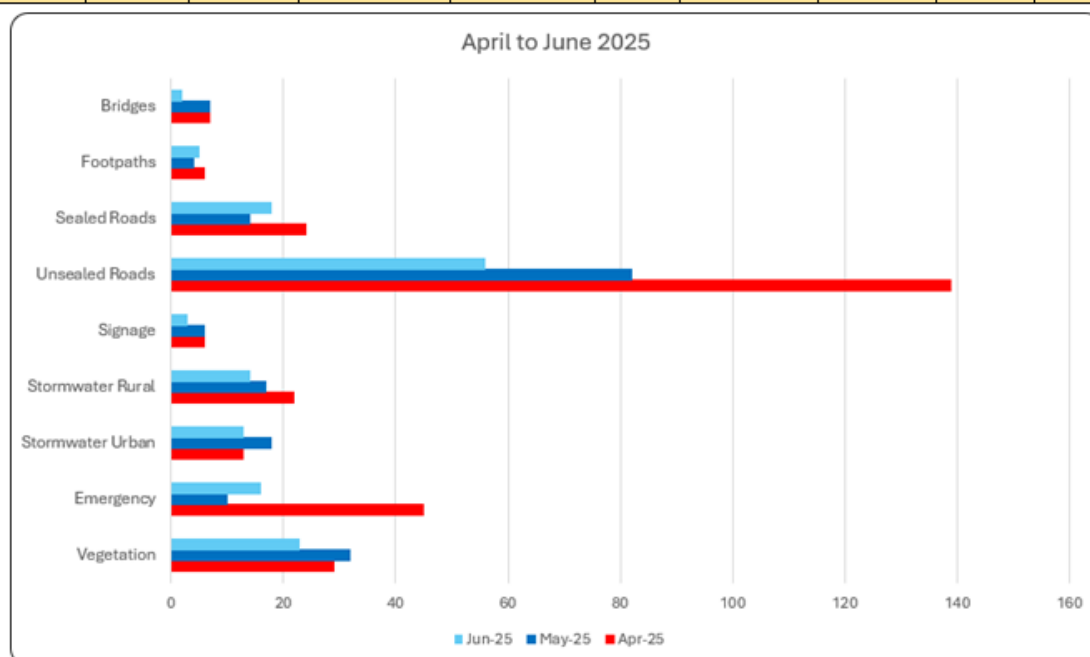
| Month  | Vegetation | Emergency | Stormwater Urban | Stormwater Rural | Signage | Unsealed Roads | Sealed Roads | Footpaths | Bridges | Total |
|--------|------------|-----------|------------------|------------------|---------|----------------|--------------|-----------|---------|-------|
| Apr-25 | 29         | 45        | 13               | 22               | 6       | 139            | 24           | 6         | 7       | 291   |
| May-25 | 32         | 10        | 18               | 17               | 6       | 82             | 14           | 4         | 7       | 190   |
| Jun-25 | 23         | 16        | 13               | 14               | 3       | 56             | 18           | 5         | 2       | 150   |

TBC

Percentage of RFS's

| Month  | Vegetation | Emergency | Stormwater Urban | Stormwater Rural | Signage | Unsealed Roads | Sealed Roads | Footpaths | Bridges | Total |
|--------|------------|-----------|------------------|------------------|---------|----------------|--------------|-----------|---------|-------|
| Apr-25 | 10.0%      | 15.5%     | 4.5%             | 7.6%             | 2.1%    | 47.8%          | 8.2%         | 2.1%      | 2.4%    | 100%  |
| May-25 | 16.8%      | 5.3%      | 9.5%             | 8.9%             | 3.2%    | 43.2%          | 7.4%         | 2.1%      | 3.7%    | 100%  |
| Jun-25 | 15.3%      | 10.7%     | 8.7%             | 9.3%             | 2.0%    | 37.3%          | 12.0%        | 3.3%      | 1.3%    | 100%  |

TBC



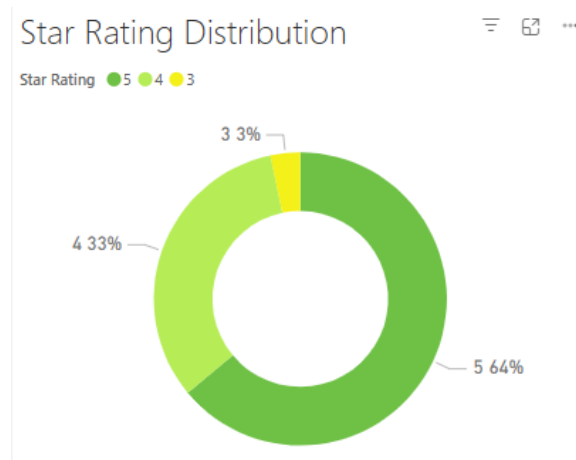
## 17. COMPLIMENTS

We received two compliments for the month of June:

Customer 1 wrote – “*I just wanted to express our sincere thanks for the amazing job the Ventia roading team did on upgrading our road. It looks and feels amazing. Many thanks!*” – Waikaramu Road.

Customer 2 wrote – “*Thank you, I appreciate your reply, and I am relieved to know you are able to mitigate this next month.*” – Russek Road.

## 18. HEALTH & SAFETY & WELLBEING



As of 26th June, the Branch has achieved an 8% increase in 5-star rated drivers. This positive shift has contributed to a 7% reduction in 4-star drivers and a 2% decrease in 3-star drivers, demonstrating continued progress in the right direction.

As highlighted last month, any driver whose rating drops to 3 stars is promptly engaged by their respective manager for support and development. We are proud to report that this month, our top-performing driver is none other than Branch Manager. Not only is he leading the way locally, but he is also ranked 8th across the entire NZ Roads business—truly leading by example.

While these results are encouraging, there is still work to be done to support 3-star drivers in improving their performance, with the goal of achieving a consistent 4–5 star rating across the team.



On Wednesday, 18th June, the Quarry and Roding teams came together as one whānau to mark Matariki with a dawn karakia and shared kai. This special occasion was a time to reflect on the year past and look ahead to the opportunities of the new year. It was a meaningful moment of connection and celebration with our wider team—an awesome gathering with great people and even better kai.

## 19. TRAINING

In June, six team members participated in the *Safety in Trenches* training course provided by NZIHT. This initiative is part of our ongoing commitment to ensuring all teams involved in excavation work are equipped with the necessary knowledge and skills to operate safely and in compliance with industry standards.

Additionally, the second round of First Aid Refresher training was successfully completed on June 24th. The final session is scheduled for July. These refresher courses continue to provide valuable hands-on experience, offering team members the opportunity to collaborate and problem-solve through realistic first aid scenarios.



## 20. ENVIRONMENT

In June we had no notifiable incidents to report.

## 21. ANNUAL ROUTINE ACTIVITY ACHIEVEMENT

Routine and cyclic rounds start at the financial year (July 2024/25):

|                                      |      |                    |
|--------------------------------------|------|--------------------|
| Biennial Painting of All Rails       | 75%  | complete           |
| Biennial Parapet Painting of Bridges | 55%  | complete           |
| Annual Cleaning of EMP's             | 78%  | complete           |
| Annual Sucking of All Sumps          | 100% | complete           |
| Biannual sweeping                    | 100% | complete (round 2) |
| Urban Vegetation Spraying            | 100% | complete (round 2) |
| Rural Vegetation Spraying            | 100% | complete (round 2) |
| Line marking Network Remark          | 100% | complete           |

## 22. SMALL TO MEDIUM ENTERPRISE (SME) BUSINESS ENGAGEMENT

Summary of SME engagement through the last financial year - 1<sup>st</sup> July 23 to 30<sup>th</sup> June 24.

| Measurement                        | Qty |
|------------------------------------|-----|
| Local Contractor component of work | 38% |

## 23. OTHER WORK IN PROGRESS

### ***Kawakawa Wastewater Treatment Plant – Stream Diversion***

With the box culvert installation now complete, the team has advanced to constructing the stream diversion. This newly formed channel will connect the box culvert to the existing stream, ensuring efficient and controlled water flow. To manage water velocity and support the ecological health of the stream, two riffles will be strategically installed within the diversion to dissipate energy and minimize erosion.

Excavated material from the diversion works is being repurposed to construct a raised cattle race. This structure will be stabilised using coconut matting, then topped with topsoil and seeded with grass to encourage vegetation growth. Additionally, the stream diversion will be lined with riprap rock to provide long-term protection against scour and erosion.

Upon completion of the stream diversion, the next phase will involve decommissioning the existing twin culverts and proceeding with construction activities in Range 3.



Te

The Te Raupo Road upgrade is now approaching completion. Key milestones have been achieved, including the successful completion of watertabling and the clearance of most vegetation along the route.

The final stages of the project involve a final vegetation clearance and the installation of a “Maintenance Ends” sign near the cycle trail. Once these remaining tasks are completed, the project will be formally handed over to Council.

