

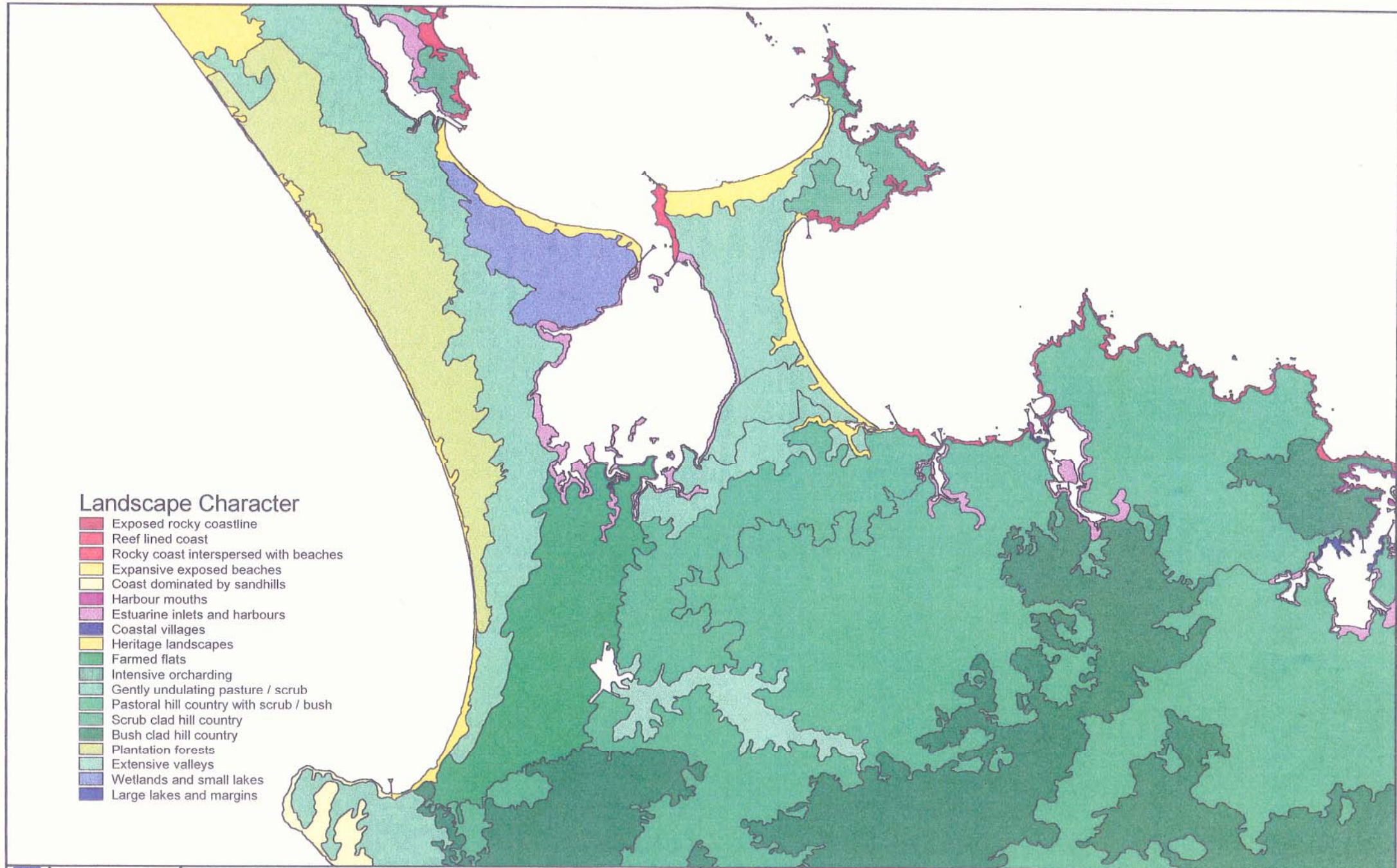
### Landscape Character

- Exposed rocky coastline
- Reef lined coast
- Rocky coast interspersed with beaches
- Expansive exposed beaches
- Coast dominated by sandhills
- Harbour mouths
- Estuarine inlets and harbours
- Coastal villages
- Heritage landscapes
- Farmed flats
- Intensive orcharding
- Gently undulating pasture / scrub
- Pastoral hill country with scrub / bush
- Scrub clad hill country
- Bush clad hill country
- Plantation forests
- Extensive valleys
- Wetlands and small lakes
- Large lakes and margins

LANDSCAPE CHARACTER



Drg 9238/6



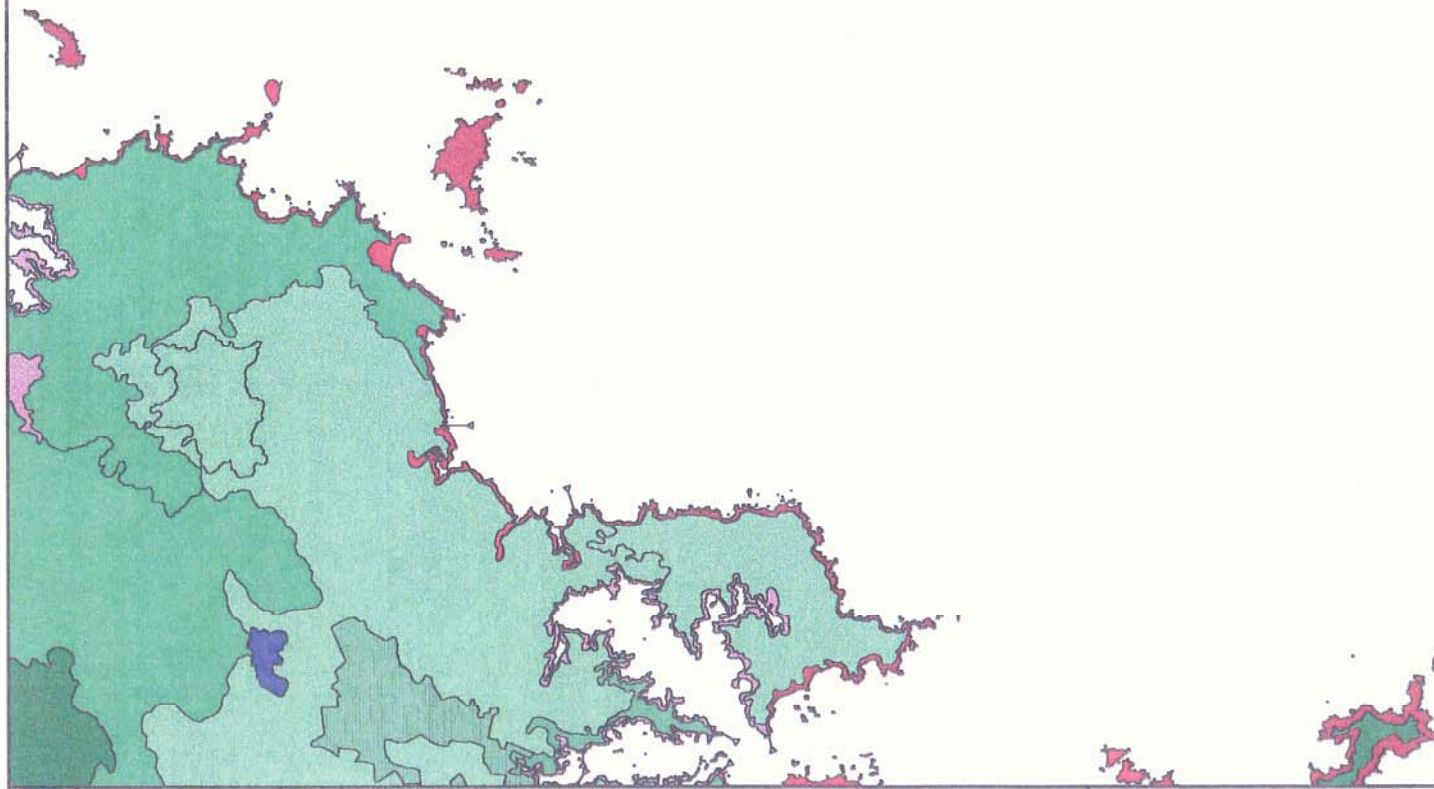
### Landscape Character

- Exposed rocky coastline
- Reef lined coast
- Rocky coast interspersed with beaches
- Expansive exposed beaches
- Coast dominated by sandhills
- Harbour mouths
- Estuarine inlets and harbours
- Coastal villages
- Heritage landscapes
- Farmed flats
- Intensive orcharding
- Gently undulating pasture / scrub
- Pastoral hill country with scrub / bush
- Scrub clad hill country
- Bush clad hill country
- Plantation forests
- Extensive valleys
- Wetlands and small lakes
- Large lakes and margins



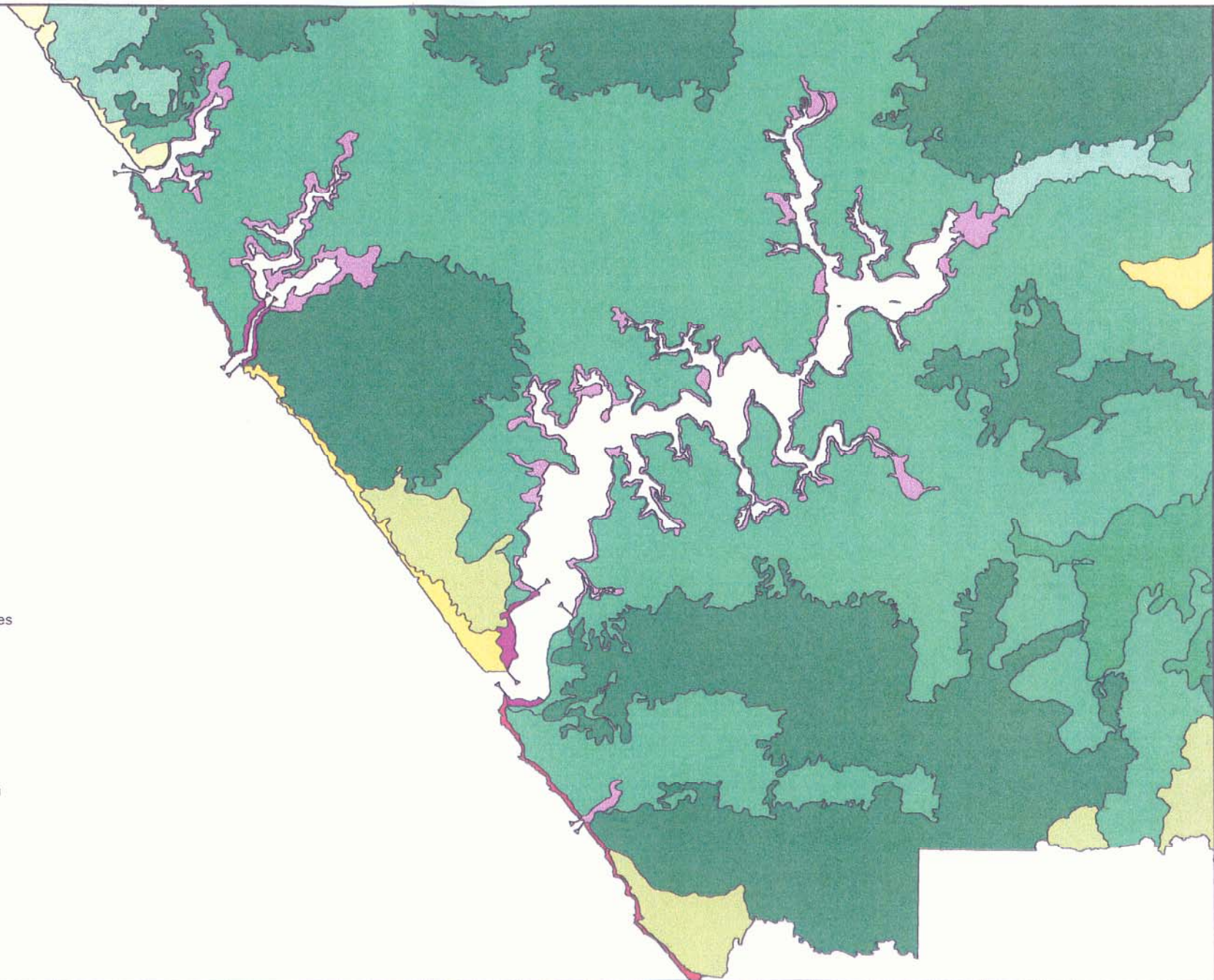
## Landscape Character

- Exposed rocky coastline
- Reef lined coast
- Rocky coast interspersed with beaches
- Expansive exposed beaches
- Coast dominated by sandhills
- Harbour mouths
- Estuarine inlets and harbours
- Coastal villages
- Heritage landscapes
- Farmed flats
- Intensive orcharding
- Gently undulating pasture / scrub
- Pastoral hill country with scrub / bush
- Scrub clad hill country
- Bush clad hill country
- Plantation forests
- Extensive valleys
- Wetlands and small lakes
- Large lakes and margins

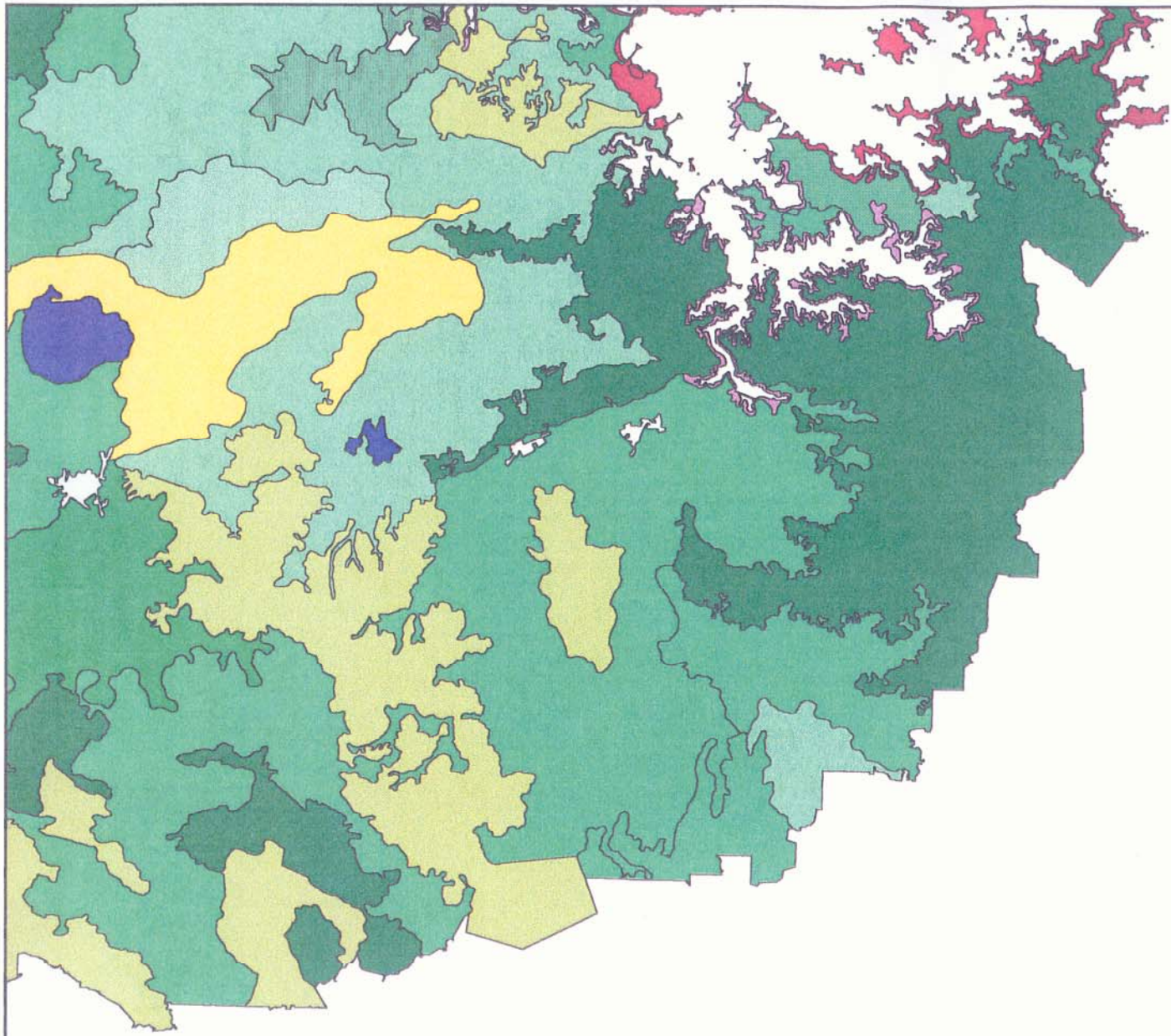


### Landscape Character

- Exposed rocky coastline
- Reef lined coast
- Rocky coast interspersed with beaches
- Expansive exposed beaches
- Coast dominated by sandhills
- Harbour mouths
- Estuarine inlets and harbours
- Coastal villages
- Heritage landscapes
- Farmed flats
- Intensive orcharding
- Gently undulating pasture / scrub
- Pastoral hill country with scrub / bush
- Scrub clad hill country
- Bush clad hill country
- Plantation forests
- Extensive valleys
- Wetlands and small lakes
- Large lakes and margins







### Landscape Character

- Exposed rocky coastline
- Reef lined coast
- Rocky coast interspersed with beaches
- Expansive exposed beaches
- Coast dominated by sandhills
- Harbour mouths
- Estuarine inlets and harbours
- Coastal villages
- Heritage landscapes
- Farmed flats
- Intensive orcharding
- Gently undulating pasture / scrub
- Pastoral hill country with scrub / bush
- Scrub clad hill country
- Bush clad hill country
- Plantation forests
- Extensive valleys
- Wetlands and small lakes
- Large lakes and margins