

Introduction





Omapere Wharf, Hokianga Harbour. Courtesy of Northland Inc.

Our vision, mission, values and expectations

Our vision

He Whenua Rangatira – A District of Sustainable Prosperity and Well-Being

Our mission

Creating great places, supporting our people

Our values - tikanga

- Manawatapu: Unity of purpose and working together
- Kaitiakitanga: Environmental stewardship and sustainability
- Mana tangata: Respect and fairness
- Te Tiriti o Waitangi: Partnership
- Tu tangata: Strong cultural identities
- Whanaungatanga: Family, community, connecting and caring

Tumanako - our expectations

- He wahi ataahua: Valuing the outstanding beauty of our District
- He waka hourua: Fit for purpose infrastructure underpinning success
- Kokiri tahi: Empowered communities, working collaboratively
- Oranga taiao, oranga tangata: Nurturing the environment so it nourishes us
- Oranga kainga: A thriving, sustainable local economy
- Mana i te whenua: The role of tangata whenua is valued and respected
- Te ira tangata: Rich heritage and diversity respected and celebrated
- Tangata whai ora: Happy, healthy, safe and purposeful people
- Whānau: A great place for our families to flourish

Message from the Mayor and Chief Executive Officer

Kia ora koutou

Welcome to the Long Term Plan (LTP) for 2018-28.

This document signals a new phase in the direction of our district. It focuses on funding growth where it's most needed, while consolidating and building on the infrastructure gains we have achieved over the past three years.

Since our last LTP 2015-25, we have worked hard to address historic infrastructure gaps. We have achieved some important wins including the new Kerikeri sewerage scheme due for completion next year, and we have begun work on Te Hiku Sports Hub in Kaitaia. We are constructing a new water treatment plant at our Rawene / Omanaia water supply and we have completed the Twin Coast Cycle Trail, which is already attracting thousands of cyclists and creating new opportunities for business.

We are now well-placed to invest in new initiatives to make the Far North an even better place to live. The need for fresh investment could not be stronger. Our region has experienced considerable growth in recent years with a surge in migration from Auckland and elsewhere, and a boom in tourism. The Labour-led Government elected in 2017 has shown a willingness to help by increasing investment in regional economies. The Far North has been an early beneficiary with the Provincial Growth Fund pledging millions for a range of projects to promote sustainable development, long-term jobs and growth for our people. Several of the initiatives in our Long Term Plan will benefit from this funding.

Once again we were impressed by the level of engagement residents have shown during the LTP consultation process. We received 866 submissions and 130 submitters spoke with councillors and staff during three days of hearings held in Kaitaia, Kaikohe and Kerikeri. Most supported the proposals we put forward, some voiced reservations and others suggested alternatives to consider. Wherever possible we have incorporated your views.

We are particularly pleased this Long Term Plan will deliver a community and civic hub for Kaikohe. There was strong support for this proposal and councillors have confirmed \$11.8 million to make this a reality. We will now work with partners, including Ngapuhi and central government, to create a suitable design we can then consult on with the community.

Kaitaia's aging wastewater infrastructure will also get a major upgrade. The Council has opted to spend \$13.4 million to

eliminate wastewater flowing into our waterways during severe weather. The option selected will limit this happening to only the most severe 'once-a-year' weather events.

Roads are a lifeline for all Far North communities. We had proposed several significant roading initiatives to keep traffic flowing smoothly in Kerikeri, our most vibrant economic hub. However, we agreed funding these initiatives could unfairly penalise others in the district with pressing roading issues. We have instead agreed that a decision on the South Eastern Bypass in Kerikeri, and the Waipapa to Kapiro link will be delayed for the time being until we have determined a district-wide roading strategy.

Submitters were keen on proposals to extend the success of the Twin Coast Cycle Trail – Pou Herenga Tai by creating more connections within our district. To achieve that, we will invest \$26 million between 2022 and 2028, and a further \$18.7 million beyond the term of this LTP. These projects will only go ahead if the government is willing to contribute at least 50 per cent of the cost. We will also invest \$4.6 million to replace the Opuia to Taumarere leg of trail. This part of the 'twin coast' experience could be lost when the Bay of Islands Vintage Railway Trust resurrects its rail link along that part of the rail corridor, and submitters agreed we should find an alternative.

We also made decisions on issues not specifically raised in our consultation document. These include bringing forward existing plans to prevent flooding of West Coast Road in Panguru, and boosting funding for Animal Control so we can increase staffing levels at our dog pounds.

We are genuinely excited by the opportunities this plan offers. We believe this 10-year blueprint will become a springboard for sustainable growth across our district. It is a programme that promotes growth where it is most needed. It will support business and employment, and make our communities more liveable.

Ngā mihi.



John Carter QSO
Mayor



Shaun Clarke ONZM
Chief Executive Officer

Mayor and Councillors



Hon John Carter
QSO
Mayor



Cr Tania McInnes
Deputy Mayor
Bay of Islands-
Whangaroa Ward



Cr Ann Court
Bay of Islands-
Whangaroa Ward



Cr Dave Hookway
Bay of Islands-
Whangaroa Ward



Cr Kelly Stratford
Bay of Islands-
Whangaroa Ward



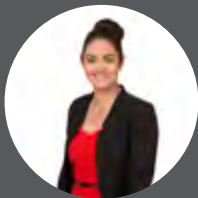
Cr Sally Macauley
QSM
Kaikohe-Hokianga
Ward



Cr John Vujcich
Kaikohe-Hokianga
Ward



**Cr Colin 'Toss'
Kitchen MNZM**
Te Hiku Ward

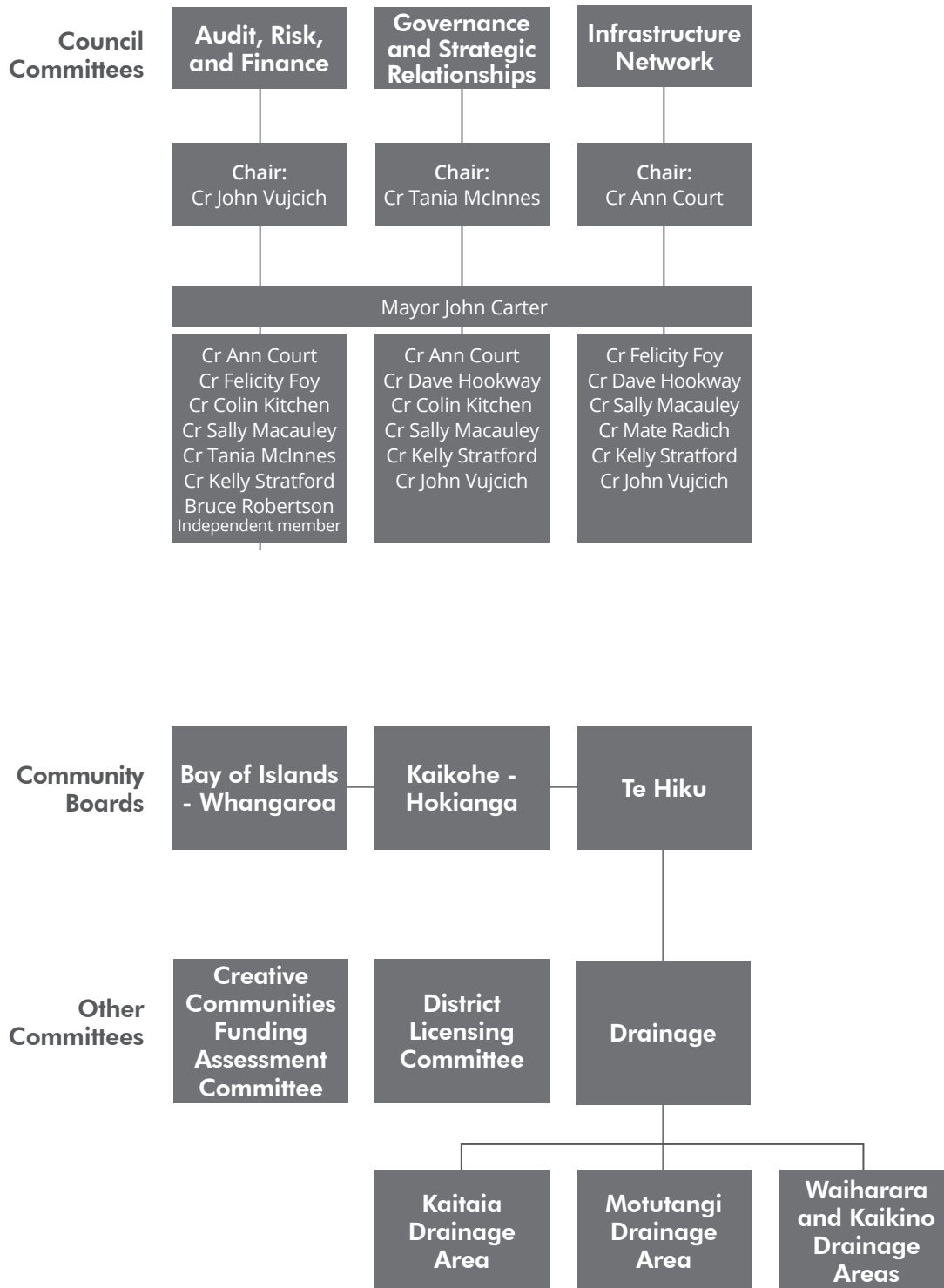


Cr Felicity Foy
Te Hiku Ward



Cr Mate Radich
Te Hiku Ward

Committees and delegations



Community Boards

Bay of Islands - Whangaroa



Terry Greening
Chair
Russell-Opua



Belinda Ward
Deputy Chair
Paihia



Lane Ayr
Kerikeri

Kaikohe - Hokianga



Mike Edmonds
Chair
Kaikohe



Emma Davis
Deputy Chair
North Hokianga



Shaun Reilly
Kaikohe

Te Hiku



Adele Gardner
Chair
Kaitaia



Melanie Dalziel
Deputy Chair
North Cape



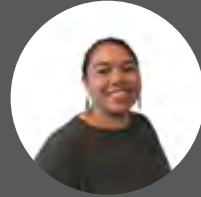
Laurie Atkinson
Whatuwhiwhi



Rachel Smith
Kerikeri



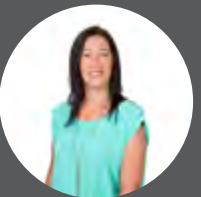
Bruce Mills
Whangaroa



Manuwai Wells
Kawakawa-Moerewa



Martin Robinson
Kerikeri



Kelly van Gaalen
Kaikohe



Louis Tooreburg
South Hokianga



Vacant
South Hokianga



Awhina Murupaenga
Kaitaia



Bronwyn Bauer-Hunt
Kaitaia



Nuu Ward
Doubtless Bay

Management structure



Shaun Clarke
Chief Executive
Officer



Richard Edmondson
Manager
Communications



Jill Coyle
Manager
People and
Capability



Samantha Edmonds
General Manager
Corporate Services
Group



Dr Dean Myburgh
General Manager
District Services
Group



Andy Finch
General Manager
Infrastructure and
Asset Management
Group



Kathryn Ross
General Manager
Strategic Planning
and Policy Group

Organisation structure

